



WALLTITE[®]

The airtight insulation solution

Concrete slab ground floor insulation

Data sheet 4.3

 **BASF**

We create chemistry

Concrete slab ground floor insulation

Data sheet 4.3

Description

WALLTITE is applied directly to the concrete. Under-floor heating pipes can be fixed to the foam with the normal clips. A layer of tamped or self-levelling screed is applied, usually to a depth of 75mm. The process is extremely quick to apply compared to other methods and the problems of insulation boards lifting are avoided. Site overhead time and material waste from off-cuts are minimised.

Certification

BBA Certificate No. 11/4816.

WALLTITE has undergone various performance tests. Certificates are available on request.



Technical data

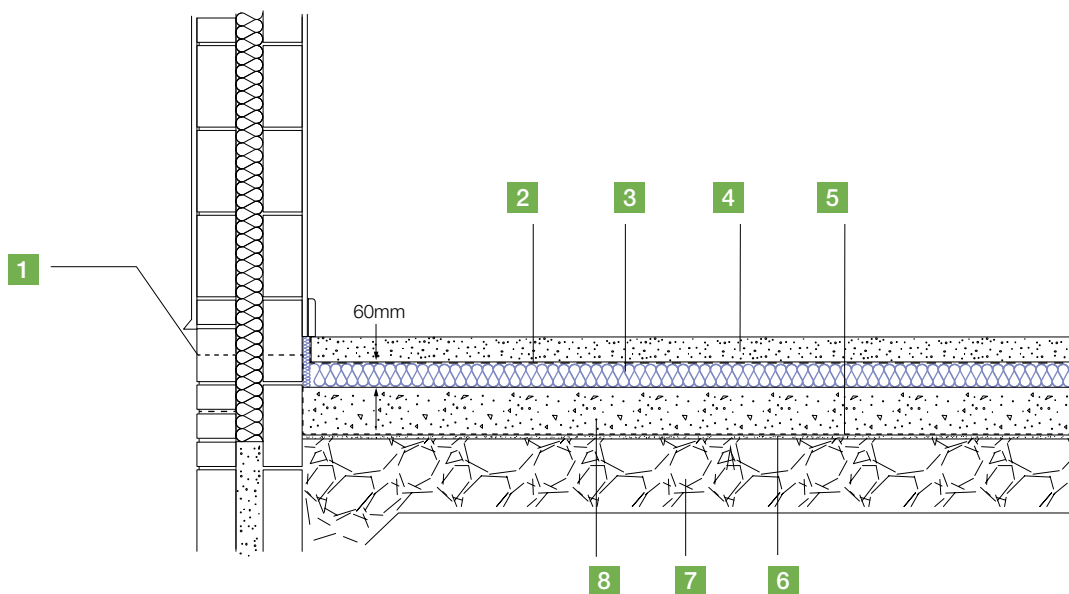
Adhesion to concrete	260kPa
Lambda 90/90	0.025 to 0.028W/mK
Fire rating	Class 1 to BS 476 Part 7
Compressive strength	259kPa

U-values

Thickness of WALLTITE (mm)	U-value (W/m ² K)
100	0.16
80	0.18
65	0.20

Typical detail:

Ground floor insulation (concrete slab)



1. DPC
2. Separating layer 500 gauge DPM returned up wall at perimeter
3. WALLTITE returned to form wall perimeter insulation
4. Screed
5. DPM set below slab
6. Sand blinding
7. Well consolidated hardcore
8. Concrete slab



WALLTITE®

BASF plc, Alfreton Trading Estate, Wimsey Way, Somercotes, Alfreton, Derbyshire DE55 4NL

Tel +44 (0)1773 601166 Fax +44 (0)1773 602089 E-mail walltite-uk@basf.com www.walltite.basf.co.uk